



Proficy[™] Change Management

As a manufacturer, consistency and control are crucial elements of your success. Your ability to maximize productivity while minimizing operational costs will often determine whether or not your business can survive in today's highly competitive and tightly regulated environment.

Proficy Change Management from GE Fanuc Automation is a powerful solution for managing your automation systems and protecting your software and engineering investments. As an important part of our Asset Management

family of Intelligent Production Management applications, Proficy Change Management helps you meet key performance indicators and turn your manufacturing processes into a competitive advantage for your business. With powerful capabilities including security, version control, audit trails, central storage and automated backup and recovery, Proficy Change Management ensures that your automation systems continue running safely and efficiently.



Proficy Change Management Features and Benefits

Increased Plant Uptime

- Provides immediate, reliable disaster recovery
- Ensures that backups are always available when needed
- Prevents or significantly reduces user errors
- Ensures that the latest data is always available during recovery

Improved Engineering Processes

- Provides a common methodology for accessing device files and other plant information
- Maintains consistency between multiple facilities
- Helps enforce Good Manufacturing Practices throughout your organization
- Facilitates teamwork and collaboration

Reduced Costs of Engineering and Maintenance

- Provides ongoing control over a large number of device and software programs in a multi-user environment
- Lowers costs by automating tasks (i.e., scheduling)
- Reduces equipment failure and related maintenance costs
- Remains compatible with a large array of complementary hardware and software offerings
- Reduces maintenance costs by backing up your system automatically

Improved Safety, Security and Regulatory Compliance

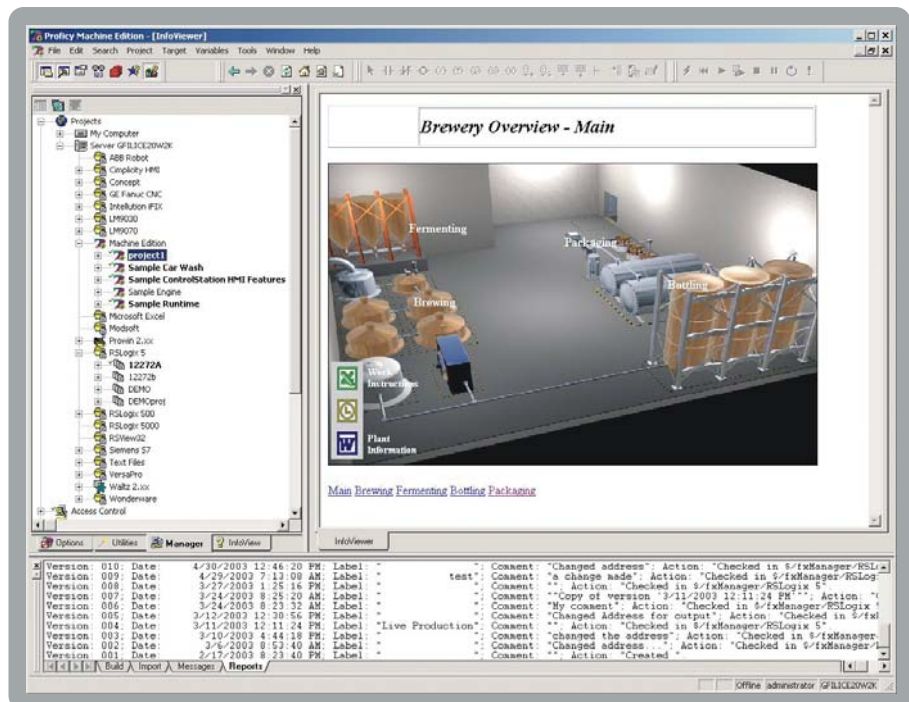
- Prevents errors by automating critical manufacturing functions at the configuration level
- Controls access to your operation to ensure consistency and security
- Prevents and detects unauthorized changes and access requests
- Supports Electronic Signaturing required to meet the FDA's 21 CFR Part 11 regulation
- Controls and monitors access to projects and devices
- Automatically tracks significant events throughout your operation

Protection of Key Information Assets

- Client/Server based system
- Stores all critical information on the server and deployed to clients as needed
- Facilitates plant device backups
- Keeps historical revisions of program and device changes
- Automatically provides and maintains version numbering
- Easily restores previous versions
- Provides version labeling for custom naming or numbering.
- Controls and safeguards the checkout process

Increased Flexibility

- System works with the entire plant regardless of networking structure
- Adapts to work on existing infrastructure
- Provides customizable HTML interface for ease of use and flexibility to support multiple languages and end user requirements
- Connects quickly and easily to other systems
- Full integration available with our full suite of products, including powerful Intelligent Production Solutions applications such as Proficy Historian and Proficy Real-Time Information Portal
- Scripting engine leverages visual basic script
- Allows for easy modification of standard functions
- Provides added support for new software and devices
- Customizes order of operations



The Proficy Change Management environment is flexible and provides easy to use access for projects and system information. This allows you to access and edit your projects quickly and easily.

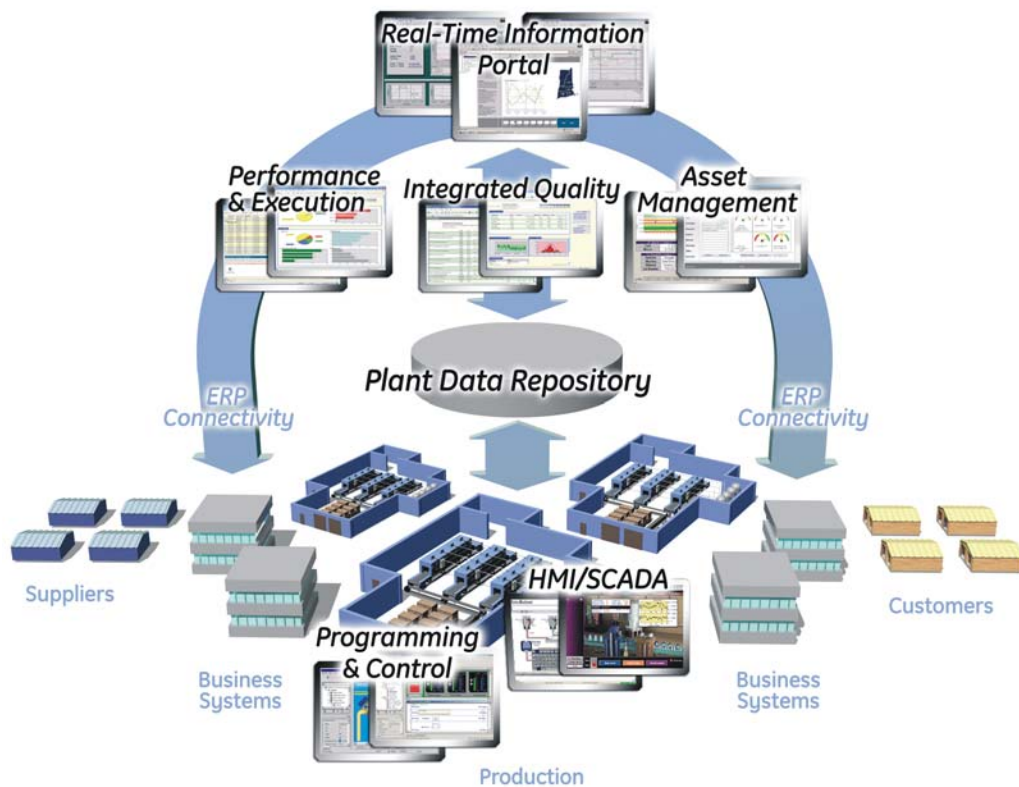
Proficy™ Intelligent Production Solutions

For years, manufacturers throughout the world have recognized the critical link between production efficiency and profitability. But as new competitive pressures emerge, even the most successful companies are being forced to continually streamline their operations.

The demand for speed, agility and responsiveness in your production operations has never been greater – transforming not only how you manage production assets, but how you do business. As a result, real-time production management is now a cornerstone of any profitable company. And GE Proficy is the cornerstone of real-time production management.

GE Proficy is an open, powerful Intelligent Production Solution that provides the plant automation, analysis and execution capabilities that every manufacturer needs, along with the connectivity to the business environment that every company craves. And whether you implement an entire group of applications or simply install an individual module to meet a specific production need, GE Proficy enables you to incorporate the right solution for your business at any time – regardless of your current automation infrastructure.

Imagine a seamless, cohesive and entirely modular infrastructure that brings the worlds of business and manufacturing together as one – from GE, the company that has set the worldwide standard of excellence for both. The implications for your success are endless.



Performance and Agility for the Real-Time Enterprise

GE understands that businesses today are under continuous pressure to increase productivity and improve profitability.

The GE Proficy intelligent production solution integrates a full range of easy-to-use applications and services to continuously improve your level of productivity. It has been developed to build intelligence into your processes – gathering, analyzing, and transforming data into information and enabling you to act in real-time to optimize results.

GE Proficy connects the equipment on your floor, business systems and decision-makers. This closed-loop experience ensures that production runs smoothly, efficiently and with greater profitability.

With GE Proficy, you'll have the resources to meet your greatest manufacturing challenges, through a combined set of capabilities including:

- **Plant Intelligence** – Making business sense out of plant data in real time
- **Asset Management** – Optimizing profitability by managing equipment and other plant assets
- **HMI/SCADA** – Improving production performance with plant floor visualization and control
- **Programming and Control** – Allowing you to develop Motion, PLC and PC Control and visualization applications in a single integrated environment
- **Software Services** – Maximizing your software investment through GE support, training, and professional services

GE Fanuc Proficy Change Management: Advanced Management and Control Software

Automation management is an important part of meeting your production requirements and business goals. To be successful, today's manufacturers require solutions that can meet a wide variety of needs – improving efficiency, increasing uptime, protecting security, and reducing errors, all while leveraging existing investments. Proficy Change Management from GE Fanuc Automation delivers on these goals, along with many others that contribute greatly to your success.

As a key part of GE Fanuc's Asset Management family of Intelligent Production Solutions, Proficy Change Management focuses on managing a company's data assets by monitoring, controlling, and protecting the wide range of data being generated throughout your operation. As a result, it can significantly enhance your overall productivity, quality, security and flexibility, while helping you meet crucial regulatory requirements within your industry.

Increase Quality, Efficiency and Productivity

Client/Server System

Proficy Change Management is a client/server system with functionality focused on making your manufacturing environment more efficient. It can improve daily operations and throughput and provide detailed tracking of your operation – helping to meet essential business goals and regulatory requirements.

Proficy Change Management allows you to keep your plant's critical files, programs and applications in a central, secure location. This ensures that they are easily accessible in the event of a device failure, allowing you to get back up and running as quickly as possible. The server is also the core storage unit for the information, configuration and product modules contained within the system.

Version Control

Version Control is one of Proficy Change Management's key features. It ensures that only one person at a time is making changes to the system, and archives the versions once those changes are made.

This feature also provides the ability to revert to previous versions. For example, if unauthorized changes are made, it is very easy to restore a previous version in order to keep your operation running.

Scheduled Functions

The Proficy Change Management Scheduler significantly reduces the wasted time, cost and effort of performing repetitive tasks associated with database backup. Rather than having to manually locate and back up the latest databases in the system, the Scheduler allows you to automate PLC or device reads in order to back up what is currently running.

Another key feature of the Scheduler is that it is distributed. The distributed Scheduler allows you to centrally store events on the server and have the actual tasks run on one or many clients.

Improve Security and Regulatory Compliance

Audit Trails and Reports

Audit trails are another key part of the Proficy Change Management application. Audit trails allow you to track what has been happening with programs and devices in your plant, automatically providing the "who, what, when, where and why" information of events taking place throughout your operation.

Access Control

The Access Control function allows you to control who has access to various projects and devices in the system. A user ID and password are required whenever a user logs on. Based on login information, you can control which projects that user can access within the system. Overall, Proficy Change Management's Access Control features allow you to reduce the number of errors that occur due to unauthorized access to the system.

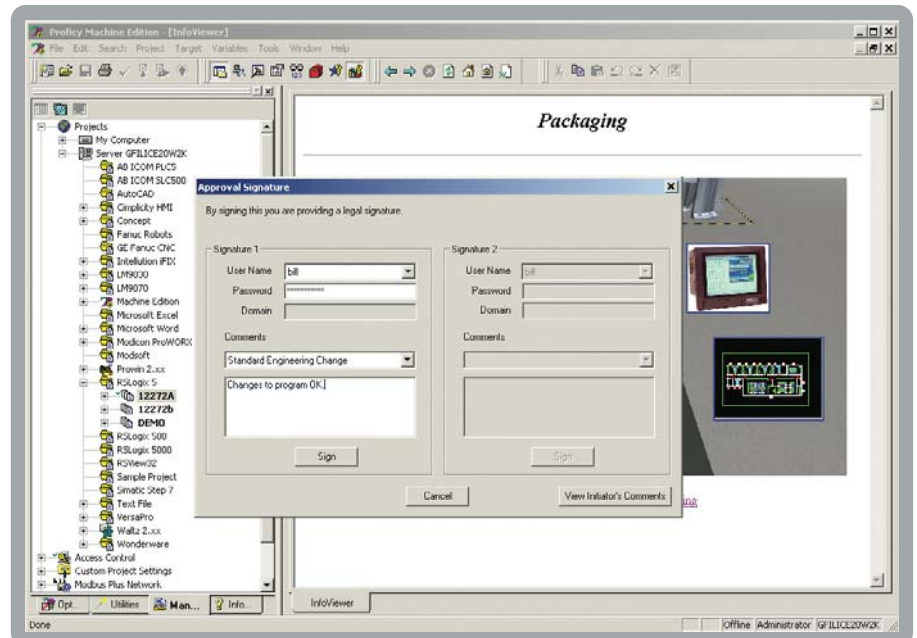
Electronic Signatures

Proficy Change Management allows you to gain additional control over your plant by giving you the ability to require authorization on changes

to devices and projects. Whether your goal is to improve Good Manufacturing Practices or comply with the FDA's 21 CFR Part 11 regulation, the Electronic Signature functionality helps you have more control over what is being changed throughout your plant.

Electronic Signatures functionality include:

- **Verify Current User**
Proficy Change Management uses a check in/check out process to control changes to project files. This ensures that the change initiator is the only person allowed to finalize changes to the system.
- **Authorization Signatures**
In order for changes to take effect, an authorization signature or signatures can be enforced. These signatures use the guidelines set out by the FDA to ensure proper user signature standards.
- **Preconfigured Comments**
To save time and ensure a high level of quality change documentation, the authorization system allows you to predefine commonly used comments, making it easier for users to document required changes.



Electronic Signatures

The Electronic Signature functionality helps gain further control over changes, and helps achieve regulatory compliance. Designed with 21 CFR Part 11 in mind, it allows for an extra level of accountability.

Enhance Flexibility and Ease of Use

HTML Interface and Plant Layout

The HTML or "graphical plant" layout allows you to customize your end-user interface to match your plant's needs. This powerful point-and-click interface makes accessing projects and devices as easy as surfing the Internet! Users can literally point and click their way around a replica of your plant – increasing ease of use and reducing errors and training requirements.

System Components

The Proficy Change Management Automation Management System consists of the Server, Client and Scheduler. These components can co-exist on a single PC or be distributed among different PCs – allowing ultimate flexibility.

- **Server**

The Server is the heart of the system, handling storage, version control, audit trail, Scheduler events and user and group configuration, as well as web page storage and serving.

- **Client**

The Client is the piece that provides the interface between the user and the Server. All administrative and user functions are performed from here.

- **Scheduler**

The Scheduler is a specialized client that performs automated tasks. It communicates with the Server to locate events, gather project information and return results.

- **Options**

The Electronic Signature module is available as an option for those that require additional security and traceability.

Product and Device Support

To maximize the flexibility of your system, Proficy Change Management integrates seamlessly with other GE Fanuc products including CNC, PLC, Proficy HMI/SCADA – CIMPLICITY® and iFIX®, as well as many other manufacturer's products and devices. In addition, Proficy Change Management can be customized to work with virtually any file-based application.

Maximize Your Investment

Service, Support and Training

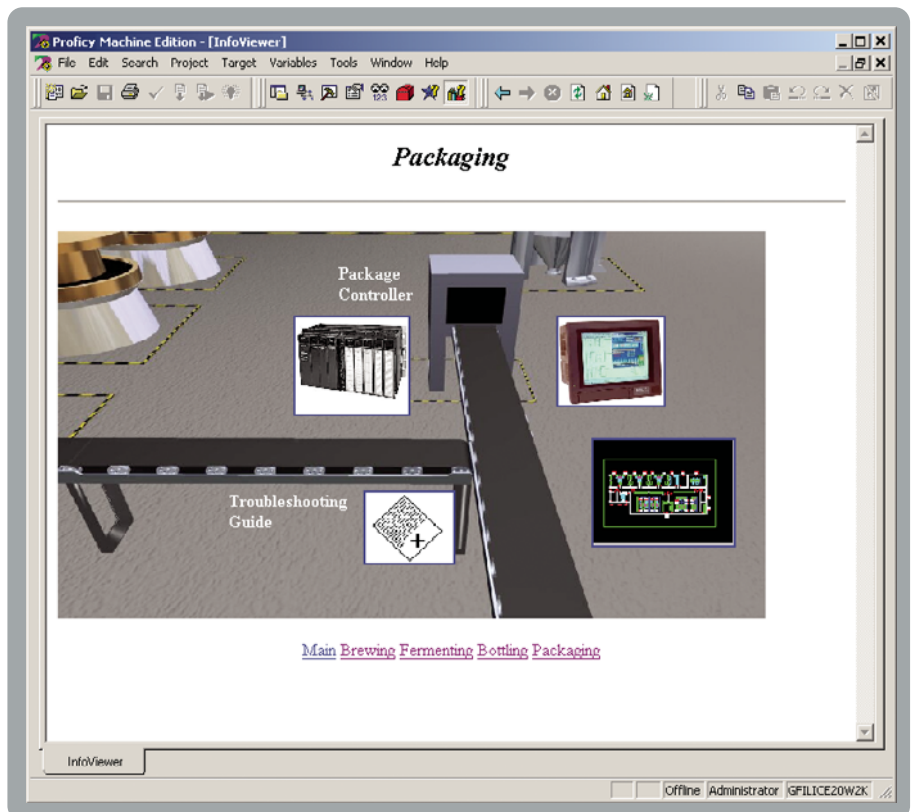
Ensuring a smooth transition is an important part of integrating a Proficy Change Management system into the day-to-day operations of your plant. To accomplish this, we offer our customers a variety of support services:

- **Consulting** – an evaluation of your current system and a determination of how Proficy Change Management can best be deployed
- **Installation** – our turnkey solution to get your system up and running smoothly
- **Customization** – custom interfaces for products you may use in your plant
- **Support** – our award-winning Proficy GlobalCare Complete Support is available to provide 24x7 emergency support, product upgrades, comprehensive information resources and much more
- **Validation Assistance** – essential for implementing in a regulated environment
- **In the Box solutions** – preconfigured systems that include Change Management Software, hardware, training and services

Proficy Change Management: A Competitive Advantage for Your Business

Whether purchased as a stand-alone solution or as a complement to your existing infrastructure, GE Fanuc Automation Manager is a powerful asset to help improve efficiency, reduce costs and maximize quality in your production processes.

Visit www.gefanuc.com or contact your local GE Fanuc Representative to learn how this robust application can become a competitive advantage for your business.



Factory Layout Feature

Identifying and accessing projects is made even easier using the Factory Layout feature and HTML based interface. The point and click interface is intuitive and easy to use and can be customized for your plant.

Proficy Change Management System Requirements

Server: Windows® 2000/NT/XP

Client: Windows® 98/2000/NT/XP
PII 500 or higher recommended

Windows based Networking
(TCP/IP, Ethernet)

System Information:

Client/Server System running on Windows® NT

Support for most popular devices, including:

- GE Fanuc
 - Proficy Machine Edition, LogicMaster, VersaPro
 - CNC, Powermate
 - Proficy HMI/SCADA – iFIX, FIX32
- Siemens PLC and other devices
 - Step 7, Step 5
- Rockwell Automation
 - RSLogix 5/500/5000, AI Series
 - Rsview, Panelview
- Schneider
 - ProWORX Plus, NxT
 - Modsoft
 - Concept
- HMI Systems
 - Wonderware
- AutoCAD, Microsoft and more
- Universal support

Proficy Change Management Key Features

- Security
- Version Control
- Audit Trails
- HTML-based Interface
- Centralized Program and Data Storage
- Electronic Signature
- Scheduled backup and compare

Proficy Software Modules:

Real-Time Information Portal
Proficy Real-Time Information Portal

Plant Performance and Execution
Proficy Batch Analysis
Proficy Batch Execution
Proficy Efficiency
Proficy Production
Proficy Tracker
Proficy Machine Tool Efficiency

Integrated Quality
Proficy Quality
Proficy Non Conformance Reporting
Proficy Shop Floor SPC

GE Fanuc Support & Services:

GE Fanuc Automation Information Centers

Americas:
1-800-GE FANUC or (434) 978-5100

Europe, Middle East and Africa:
(352) 26722-1

Europe, Middle East and Africa (CNC):
(352) 727979-1

Asia Pacific:
86-21-3222-4555

Plant Data Repository
Proficy Historian

Asset Management
Proficy Enterprise Asset Management
Proficy Remote Monitoring & Diagnostic
Proficy Change Management

HMI / SCADA
Proficy HMI/SCADA – iFIX®
Proficy HMI/SCADA – CIMPLICITY®
Proficy View – Machine Edition

Programming & Control
Proficy Logic Developer – Machine Edition
Proficy Motion Developer – Machine Edition

Proficy GlobalCare Support
Proficy Professional Services
Proficy Training

Additional Resources

For more information, please visit
the GE Fanuc web site at:

www.gefanuc.com

