



Proficy* HMI/SCADA – CIMPLICITY*

Plant-wide data collection, monitoring and control

Today's production and process environments share one important trait – they are only as effective as the quality of the data they are built upon. In order to truly understand and control your operations, you must be able to trust that your data is fully accurate, relevant and up to date. Furthermore, you must be able to share that information with users across your enterprise. As part of GE Fanuc Automation's Proficy family of software and solutions,

Proficy HMI/SCADA – CIMPLICITY gives you that power. With an open system design approach, a true client/server architecture, and the latest web technologies, CIMPLICITY allows you to realize the benefits of digitization for the collection, monitoring, supervisory control and sharing of critical process and production data throughout your operations.



Proficy HMI/SCADA – CIMPLICITY WebView

Proficy HMI/SCADA – CIMPLICITY WebView is an additional thin CIMPLICITY client solution for distributing information to many users. CIMPLICITY WebView is a fast, easy and cost-effective way to send CIMPLICITY information to users over the Internet or Intranet.

• Master Objects

Master objects are template objects that can be created and used identically on multiple screens. In addition, scripts can be linked to the master object that will be automatically replicated as well.

• Database Logger

CIMPLICITY provides you with the ability to choose how and where you want to store your critical and valuable production and process information. CIMPLICITY supports logging to the Proficy Historian, Proficy SQL (Microsoft SQL), and Oracle. You can choose to log to one, or all of these data repositories if you choose.

• Trending

Trending allows you to analyze data collected by the CIMPLICITY system or by other third-party software packages. This includes the comparison of current trends with historical trends to quickly identify and correct process malfunctions.

• Scripting

Scripting is provided to extend the CIMPLICITY capabilities for tailoring individual applications according to specific needs. Scripts can be executed based on process events, such as changing the value of a point, a specific alarm state or can be based on time of day.

• System Points

CIMPLICITY provides many predefined System Points on a wide variety of topics, such as project and computer information, date and time, and alarms.

• Dynamic Measurement Systems

CIMPLICITY projects can be developed to let you dynamically switch between different measurement systems with a simple point and click.

• Dynamic Screen Localization

The Dynamic Screen Localization enables a CIMPLICITY application to be adapted to accommodate multiple users who speak different languages.

CIMPLICITY Options

CIMPLICITY also offers a number of optional features that can further enhance the value of the software for your particular environment.

Action Calendar

The Action Calendar gives you the power to create, maintain and execute a calendar schedule of manufacturing events and corresponding actions. This allows controlling lights, heat and equipment based on a pre-defined schedule.

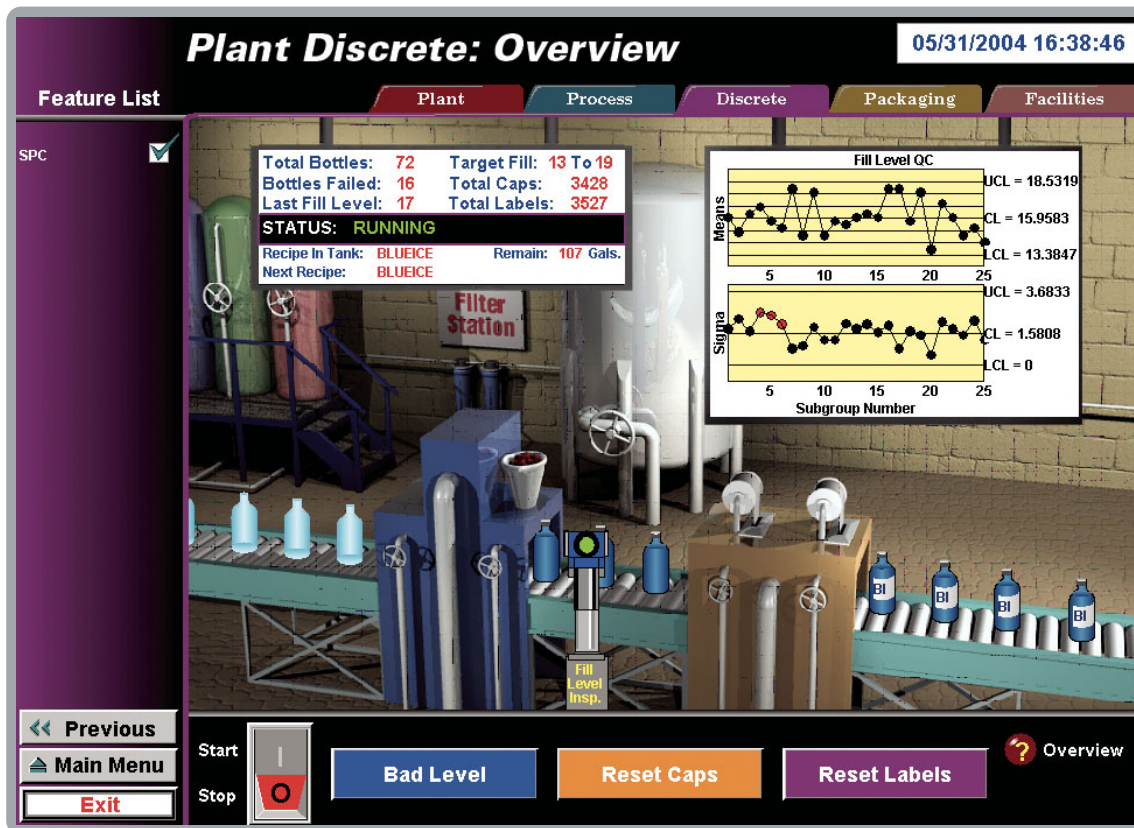
CIMPLICITY HMI for CNC

CIMPLICITY HMI for CNC provides the link of the HMI/SCADA system to GE Fanuc's Open CNC products. It offers operator interfaces, production monitoring and reporting, data acquisition and cell control for a comprehensive integration of CNC into the overall application. More information is available from www.gefanuc.com.

Integrator's Toolkit

The Integrator Toolkit includes four powerful application programming interfaces (APIs) that enable users to develop custom applications, which integrate with CIMPLICITY seamlessly. These include:

- Device Communications Toolkit
- Point Management API
- Login API
- Alarm Management APIs



Proficy HMI/SCADA – CIMPLICITY can be enhanced with powerful option modules such as SPC that are fully integrated. Your operations can be monitored continuously and any SPC related alarms are handled with the same common alarm viewer.

OLE for Process Control (OPC)

OPC allows you to integrate CIMPLICITY with other systems for seamless data exchange. There are two OPC components available within CIMPLICITY:

- OPC Client capabilities are built into HMI Servers and allow for an easy integration of third-party device communications drivers
- OPC Server is a product option that provides capabilities to offer an open systems approach to integrating CIMPLICITY with other software applications.

Recipes

Recipes allow you to create, maintain, upload and download recipes (a group of setpoints) to the production process. In addition, they allow for maintenance of device-independent recipes, sending a set of parameter values to the specified equipment.

Redundancy

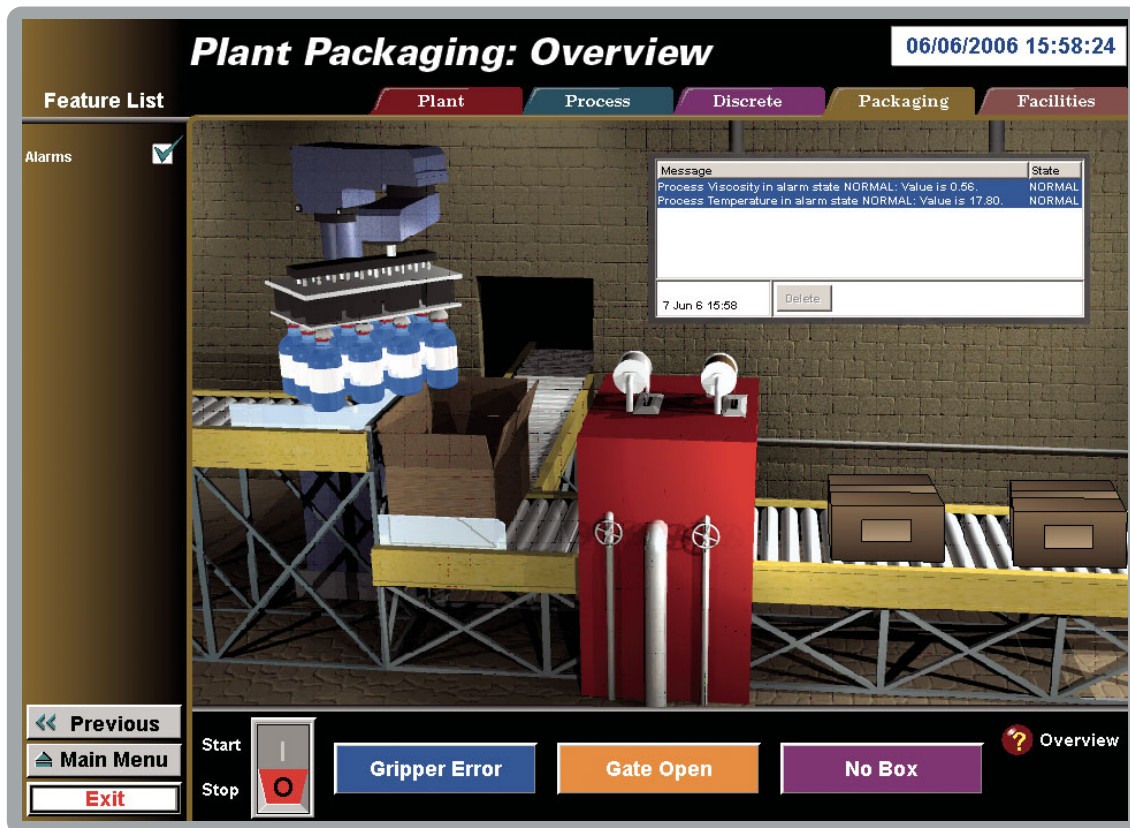
Redundancy provides for the failover from a primary computer to a secondary computer should the primary computer fail. CIMPLICITY supports redundancy at several levels to minimize the effect of any failure. These include backup CIMPLICITY Servers and network redundancy.

Statistical Process Control (SPC)

Statistical Process Control provides tools needed for data measurement and analysis, as well as process improvements and quality control.

System Sentry

System Sentry helps the user to keep the system running by constantly providing real-time information about the health of computers and the CIMPLICITY application within a network. It immediately alerts you to problem conditions and provides tools to pinpoint the cause.



Proficy HMI/SCADA - CIMPLICITY provides a powerful solution to your discrete manufacturing needs. With plant wide alarm management capabilities you can quickly isolate problems, improve quality, and reduce scrap.

CIMPLICITY and the Proficy Family of Software

CIMPLICITY provides superior HMI and SCADA functionality and establishes a solid foundation for your digitized production and process operations. A true client/server architecture and an open system design offer fast, easy integration with the ability to grow from a single computer node to a plant-wide monitoring and control system, providing real-time information from the factory floor to all levels of the enterprise.

Connecting at Every Level

CIMPLICITY integrates with the complete Proficy family of software products providing you a single solution from the plant floor to the enterprise level. GE Fanuc also understands that you cannot afford to “rip and replace” your existing systems, so it has designed CIMPLICITY with an open architecture to enable it to mesh seamlessly with your existing systems as well.

Proficy Family Integration

Historian

CIMPLICITY now uses Historian as its default logging destination. Historian provides superior performance for the storage and retrieval of your process and production information. CIMPLICITY still supports logging to SQL and Oracle, and in fact, supports logging to both Historian and these traditional destinations at the same time, putting the decision of moving your systems forward in your hands, and at your pace.

Change Management

Unique to the industry, GE Fanuc has integrated its Change Management product with CIMPLICITY to increase the security of your system and provide you with revision control of your projects. Now you can check out and check in files, roll back to known configuration, and track who has made what changes to the system. Change Management also provides you with powerful disaster recovery capabilities allowing you to restore your system to a known working point in the event of a computer failure. When you consider what downtime can cost you, this combination of Change Management and CIMPLICITY provides valuable insurance and peace of mind.

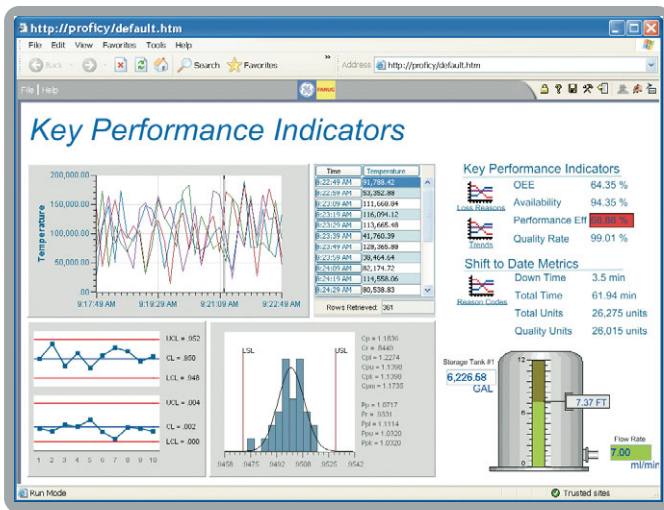
Portal

GE Fanuc’s Portal product provides the ability to perform analysis on the data that your HMI/SCADA systems generate. Enhancements have been made that now allow you to host Portal screens within your CIMPLICITY screens, or CIMPLICITY screens within your Portal screens.

View - Machine Edition

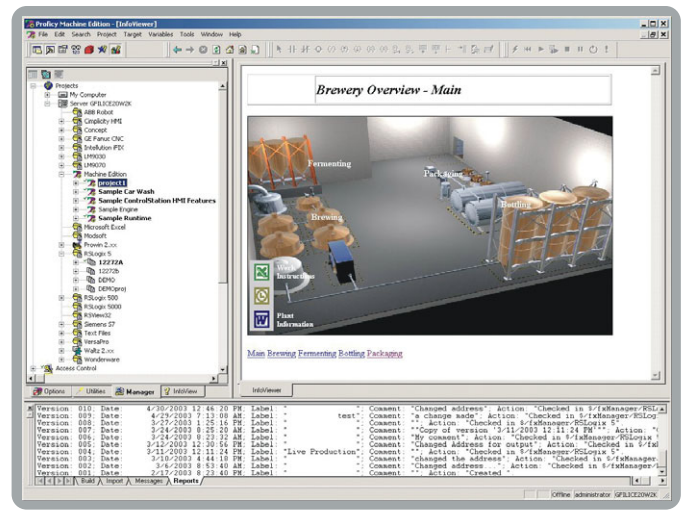
CIMPLICITY can easily integrate with View nodes to exchange points and alarms. An enhancement was added to 7.0 to allow View array points to be mapped to CIMPLICITY array points.

To learn more about this powerful product, or about our complete line of Proficy software products and solutions, visit www.gefanuc.com.



Proficy Real-Time Information Portal and Proficy Historian

One of the most robust tools for accessing, analyzing, and visualizing Proficy Historian data, Proficy Real-Time Information Portal enables users to view trends, KPIs and other critical production metrics from anywhere in the world via the Internet.



Proficy Change Management

The Proficy Change Management environment is flexible and provides easy to use access for projects and system information. This allows you to access and edit your projects quickly and easily.

Proficy HMI/SCADA – CIMPLICITY Capabilities

- Collect and share real-time and historical data with users on all business levels
- Provide actionable visibility to monitor and control plant processes, equipment and resources
- Easy application development and deployment
- Advanced alarming and alarm management to maximize productivity and quality
- Seamless scalability as a result of a true client/server architecture
- Fully integrated with the Proficy Family of Software Products
- Open system design protects your current system investments

GlobalCare – Total Service and Support

Complex business environments have complex support needs, and GE Fanuc's GlobalCare Support offering is the best and most comprehensive way to optimize your investment. We developed GlobalCare Support to function beyond the scope of a traditional, reactive support model to provide you with fast, effective solutions throughout the product lifecycle. As a result, we provide a continuously high level of service for your complex support requirements.

GE Fanuc's GlobalCare provides a consistent worldwide backbone of professionals that offer business hours and 24 x 7 emergency support, software version upgrades and advanced tools to keep you operational and productive. GlobalCare Support is available in two levels, Complete and Assist, allowing you to adopt the support solution that best meets your needs.

To learn more about GlobalCare services or the full line of automation solutions from GE Fanuc, visit gefanuc.com or call 1 800 GE FANUC (Americas), +800 1 GE FANUC (EMEA) and +86 400 820 8208 (APO).

Proficy Software Modules:

Real-Time Information Portal
Proficy Real-Time Information Portal

Plant Data Repository
Proficy Historian

Plant Performance and Execution
Proficy Efficiency
Proficy Production
Proficy Tracker
Proficy Machine Tool Efficiency

Asset Management
Proficy Remote Monitoring & Diagnostic
Proficy Change Management

Integrated Quality
Proficy Quality
Proficy Non Conformance Reporting
Proficy Shop Floor SPC

HMI / SCADA
Proficy HMI/SCADA – iFIX®
Proficy HMI/SCADA – CIMPLICITY®
Proficy View – Machine Edition

Process Solutions
Proficy Process Systems®
Proficy Batch Execution
Proficy Batch Analysis
Proficy RX™

Programming & Control
Proficy Logic Developer
Proficy Motion Developer – Machine Edition

GE Fanuc Support & Services:

GlobalCare Support
Professional Services
Training

GE Fanuc Automation Information Centers

Americas:
1 800 GE FANUC or 434 978 5100

Asia Pacific:
86 21 3222 4555

Europe, Middle East and Africa:
800 1 GE FANUC or 800 1 4332682
or 1 780 401 7717

Europe, Middle East and Africa (CNC):
352 727979 11

Additional Resources

For more information, please visit the GE Fanuc web site at:

www.gefanuc.com

