

Biometric support for password entry Proficy HMI/SCADA – iFIX® 4.0

Delivering new levels of security and operator efficiency

Proficy HMI/SCADA iFIX offers full support for Biometric device integration through two means. First, a standard interface to a third party offering enables complete “Off the Shelf” functionality. Additionally, an iFIX Integration Toolkit, delivered as an option to iFIX 4.0 ensures the ability to integrate with any Biometric infrastructure.

Biometric Overview

Security and Operator efficiencies are key to Safe and Compliant operation of any application, especially in regulated markets such as Pharmaceutical and Biotech. The use of Biometric devices, thumb print readers or iris scanners can make operator authentication, handled today through password entry, easy and foolproof.

The use of electronic signatures to validate operator activities and create audit trails has been very valuable in improving the consistency and reliability of plant operations. With the introduction of strong passwords, the requirement for passwords with defined minimum lengths and combinations of letters and numbers to enhance security adds an extra burden on the operator at times of authentication. Biometrics, the ability to use a physical property of the operator such as a finger print or iris scan, can greatly reduce operator fatigue, data entry errors and response time.

Two Biometric Solutions

GE Fanuc now offers two methods for creating a Biometric aware environment. First, GE Fanuc has developed an interface to a market leading vendor of Biometric solutions, SAFLINK® Inc. (www.saflink.com). The interface is available as a developer download from the GE Fanuc GlobalCare site. Second, the iFIX Integration Toolkit, a set of developer interfaces, includes a set of Biometric interface tools. This was delivered with the release of iFIX 4.0.

SAFLINK

The standard interface supports SAFLINK SAFsolution® Enterprise Security software. SAFsolution manages all Biometric Signatures, manages Biometric devices and integrates with Microsoft® Windows® Security.

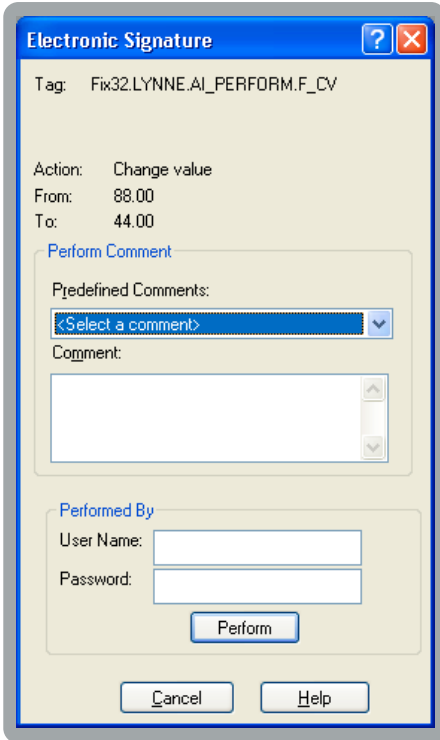
The enhanced iFIX functionality senses when a password is required, either as part of the iFIX Login or in an Electronic Signature dialog, and interfaces with SAFsolution for Biometric authentication and password fulfillment. This is a complete “Off the Shelf” solution and no software customization is required.

The installation of a Biometric solution will require the combination of GE Fanuc and SAFLINK software. SAFsolution is available through SAFLINK value added resellers. SAFsolution is available in at least two versions, pertaining to Workstation use and Enterprise use. Please contact SAFLINK for more information on these offerings at 800-762-9595.



Biometric Interface Tools

Proficy HMI/SCADA – iFIX® also supports a Biometric Toolkit, opening up the ability to interface the iFIX Electronic Signature dialog box to any third party Biometric infrastructure.



iFIX Electronic Signature Dialog

The iFIX Integration Toolkit delivers the ability to create an ActiveX control that integrates third party biometric solutions into the iFIX Electronic Signature dialogs. The two dialogs are the Perform dialog (pictured to the left) and the Perform and Verify dialog.

As signatures are required, iFIX will launch the electronic signature dialogs with the new ActiveX control for signature validation that “wraps” the third party biometric solution. Third parties are now able to integrate their Biometric software into iFIX standard dialogs through the one time development of an ActiveX control.

The benefit of this approach is that one simple change to an iFIX “Electronic Signature Required” setting applies Biometric authentication to Signature Collection throughout the entire application. iFIX offers Electronic Signature support at the core of the product, the Process Database. A simple Check Box is all that is required to enable Electronic Signature with Password or Biometric authentication.



Typical Thumb Print Reader



Typical Iris (Eye) Scanner

Biometric Device support

There are a wide variety of Biometric Devices on the market today. These range widely in sophistication from a simple \$39 Biometric integrated Mouse to a \$250 Iris Scanner and more sophisticated solutions for hazardous, outdoor or sterile environments.

Interfaces to Biometric devices are typically managed by the Biometric Infrastructure solution. Please see the lists corresponding to that software for device compatibility.

For more information

Please contact your GE Fanuc representative or call the number below.

GE Fanuc Automation Information Centers

Americas:
1 800 GE FANUC or 434 978 5100

Asia Pacific:
86 21 3222 4555

Europe, Middle East and Africa:
800 1 GE FANUC or 800 1 4332682
or 1 780 401 7717

Europe, Middle East and Africa (CNC):
352 727979 11

Additional Resources

For more information, please visit the GE Fanuc web site at:

www.gefanuc.com

