

# Alarm & Event Express

## Email Notification for GE Fanuc Proficy HMI/SCADA Products

Make sure your personnel are aware of process conditions, at all times. This simple tool generates and sends email messages based on OPC Alarm and Event Server data. All current GE Fanuc HMI/SCADA solutions offer support for OPC Alarm and Event messaging. With Alarm & Event Express, notification can come to your email system, cell phone or Blackberry™, right from your HMI/SCADA system.

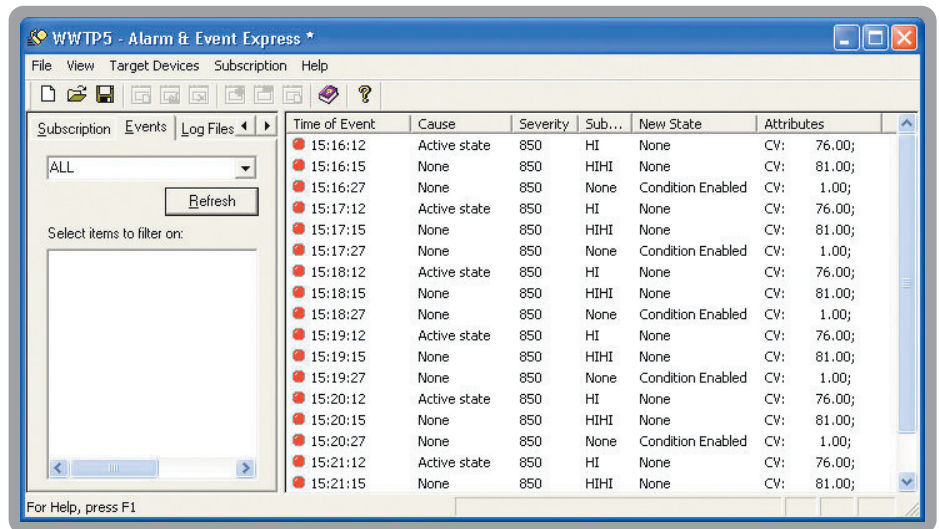
### OPC Alarms and Events

OPC Alarm and Events (A&E) is the standard for real-time access to Alarm, Event and System messages in the automation industry. GE Fanuc HMI/SCADA products all support OPC A&E, both as a Server, providing messages to other clients, and as a Client, viewing OPC A&E data from other sources. OPC Alarm & Event Express is an OPC Client that enables you to send emails based on OPC A&E messages.

### Overview of Operation

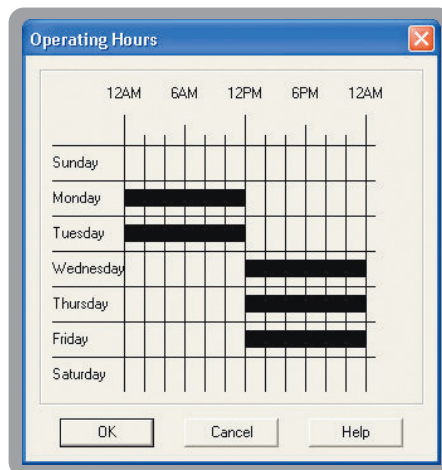
Alarm & Event Express lets you define email destinations separately from source subscriptions. Define all the possible recipients for email, complete with a weekly schedule of availability, then define subscriptions to Alarm and Event messages. As a message is detected, Alarm & Event Express will create an email message, following the user configured formatting, and sends it to one or more email recipients.

Email destinations include your corporate email servers, simply selected as an IP address or server name, and other email servers that require additional User and Password authentication.



Alarm & Event Express Main Display

Alarm & Event Express can send emails to one or more destinations. Each email destination offers a weekly schedule with hour level time resolution. The schedule controls email address validity throughout the week.



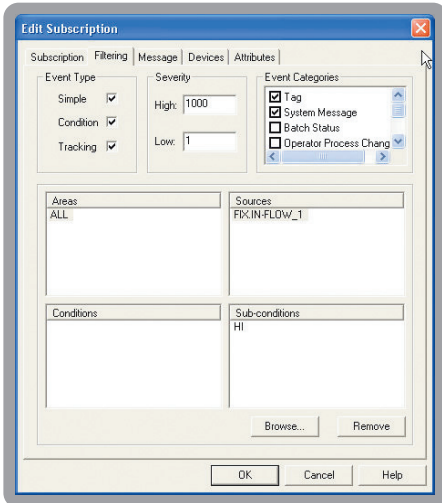
Email Scheduling

Finally, email messages can include a subject and attachments. Typical uses include highlighting the purpose of the email in the subject and attaching a report of additional information, or attaching a document that defines alarm or event management procedures.



## Subscribe to Data

Alarm & Event Express will monitor local and remote OPC A&E Server Messages as defined in a Subscription. Subscriptions may be customized based on filtering criteria. You can subscribe to all messages from an OPC Server. Subscriptions can be tightened by filtering on the types of messages, for example – Tag, System, Batch, Operator and Diagnostic messages. And, you can filter to the specific message of a Tag – High Alarm vs. Rate of Change Alarm for example. Each subscription offers the ability to select email contents (the OPC Alarm and Event Message fields to include in the body of the report), and the Email destination (Devices) address.



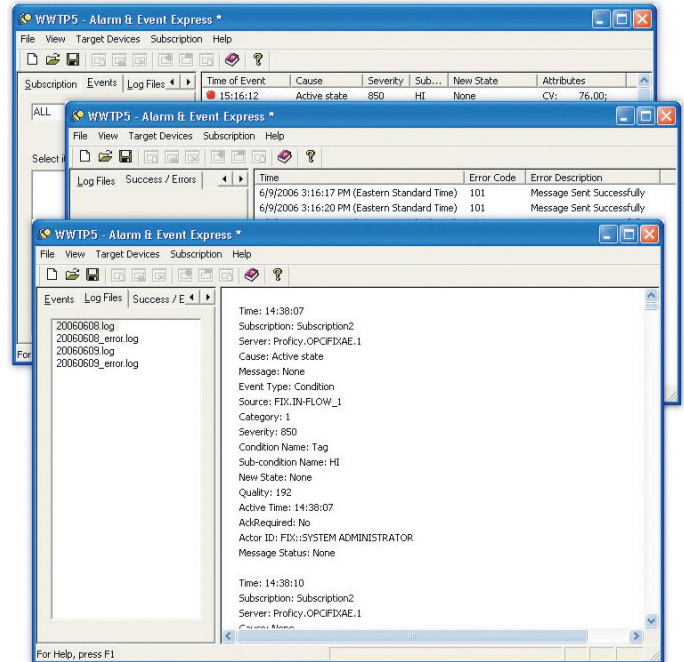
## Extensive Diagnostics

Alarm & Event Express offers a high degree of visibility into its operations. Daily logs document all Subscription activity and the status of each transaction. From Operation Status logs to Daily Transaction logs and online Event Viewing, Alarm & Event Express ensures that you have all the information necessary to troubleshoot your operation.

## Where to Get Alarm & Event Express

Alarm & Event Express can be downloaded from the HMI/SCADA Productivity Packs folder in the Developer Downloads section of the GE Fanuc GlobalCare Website at [www.gefanuc.com/support](http://www.gefanuc.com/support).

For more information on GE Fanuc Products [www.gefanuc.com](http://www.gefanuc.com)



## GE Fanuc Automation Information Centers

Americas:  
1 800 GE FANUC or 434 978 5100

Asia Pacific:  
86 21 3222 4555

Europe, Middle East and Africa:  
800 1 GE FANUC or 800 1 4332682  
or 1 780 401 7717

Europe, Middle East and Africa (CNC):  
352 727979 1

©2006 GE Fanuc Automation. All Rights Reserved.  
\*Trademark of GE Fanuc Automation  
All other brands or names are property of their respective holders.

## Additional Resources

For more information, please visit the GE Fanuc web site at:

[www.gefanuc.com](http://www.gefanuc.com)

